

Central Oregon Weekly Flu Report

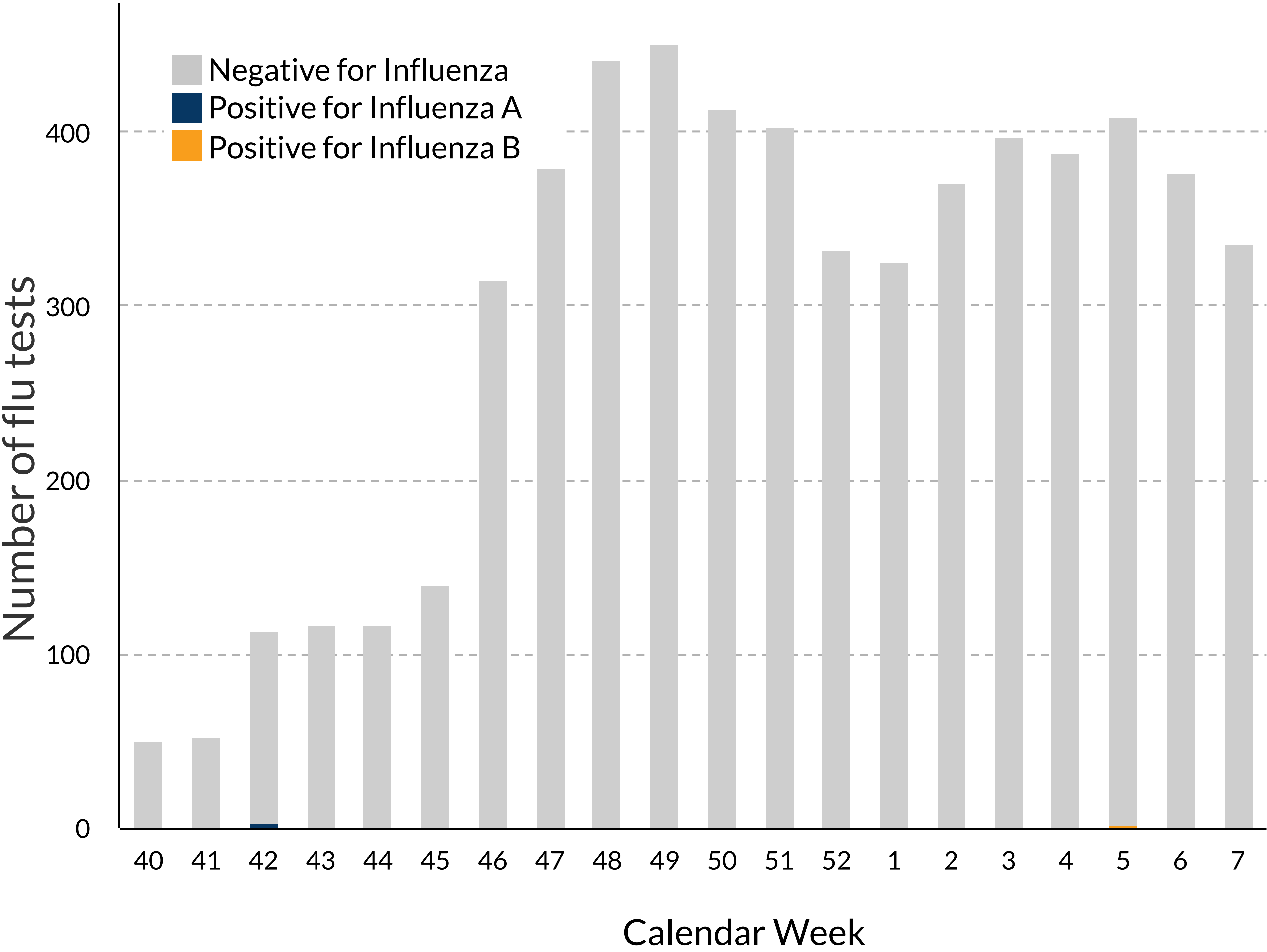
February 19, 2021



Flu surveillance summary

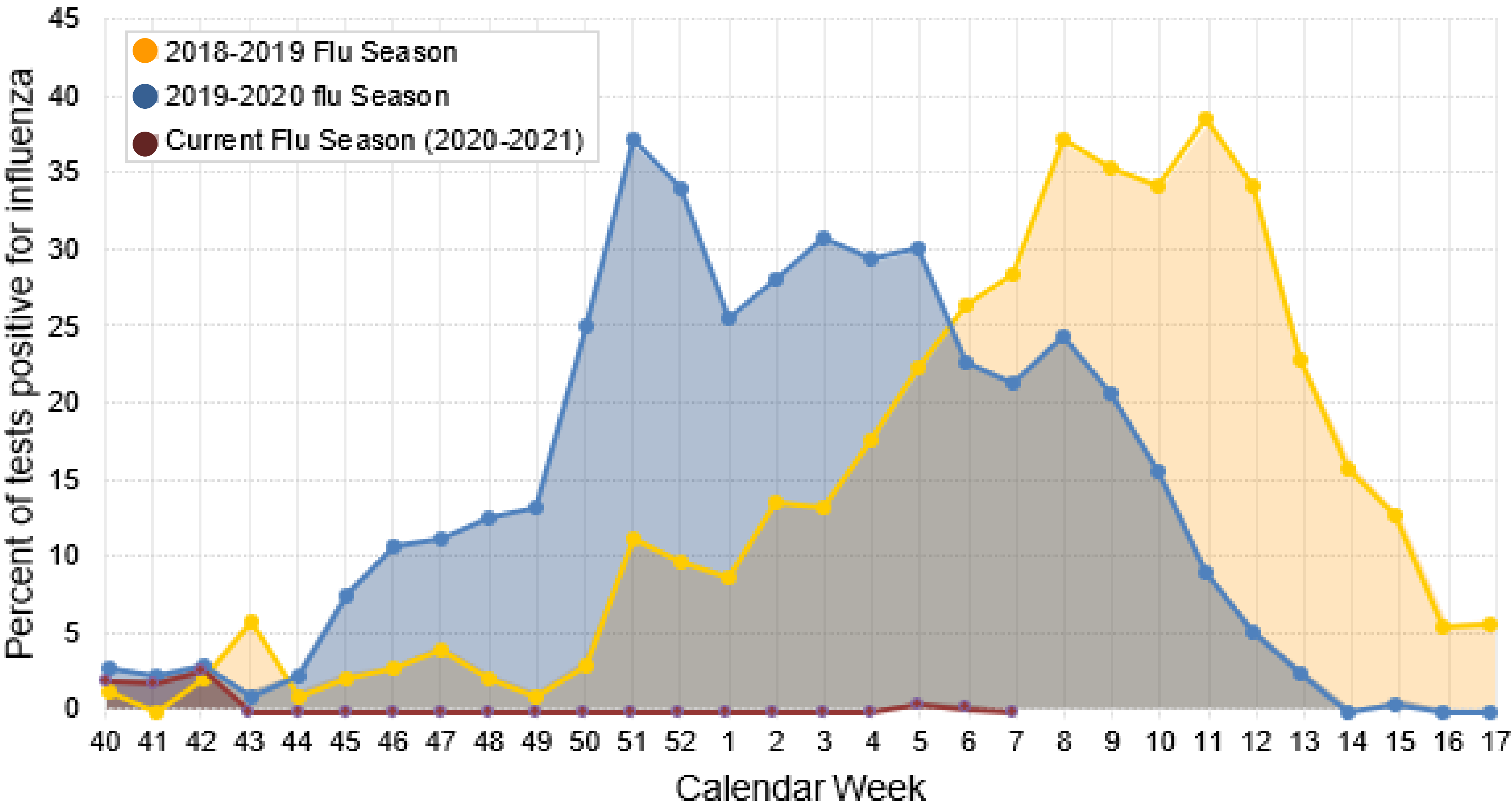
	1/24-1/30 (Week 5)	1/31-2/6 (Week 6)	Current Week 2/7-2/13 (Week 7)	Cumulative 2020-2021 flu season
Total number of influenza tests from reporting labs	408	376	336	5,959
Number of positive influenza tests (% positive)	2(0.5%)	1(0.3%)	0(0.3%)	8(0.1%)
Number of Type A positive influenza tests (% of all positive tests)	0(0.0%)	0(0.0%)	0(0.0%)	2(25.0%)
Number of Type B positive influenza tests (% of all positive tests)	2(0.0%)	1(100%)	0(100%)	6(75.0%)

Weekly number of reported flu tests and proportion of positive tests

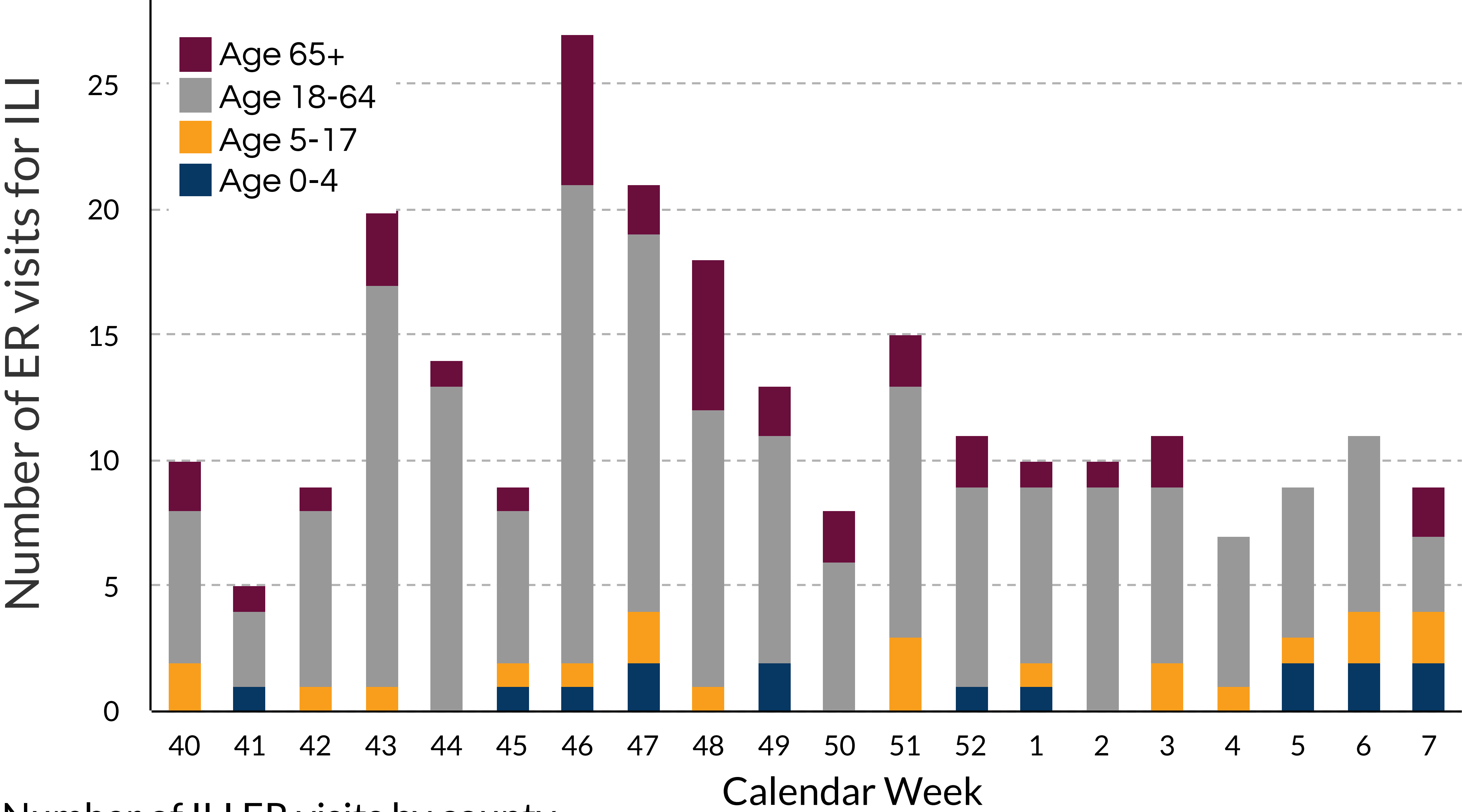


This week:
0.0%
positive

Percent of reported flu tests positive by week, 2017-2020



Number of ER visits due to influenza-like illness (ILI)* by age group and week among Central Oregon (Crook, Deschutes, and Jefferson County) residents



Number of ILI ER visits by county

	Last week	This week
Crook County residents	2	1
Deschutes County residents	6	5
Jefferson County residents	3	3

*Influenza-like Illness (ILI) is monitored through the ESSENCE syndromic surveillance database. This report includes visits by Crook, Deschutes, and Jefferson County residents to any ER across the state of Oregon.

*Due to a technical issue, ILI data has been corrected for previous week (weeks 51-3).